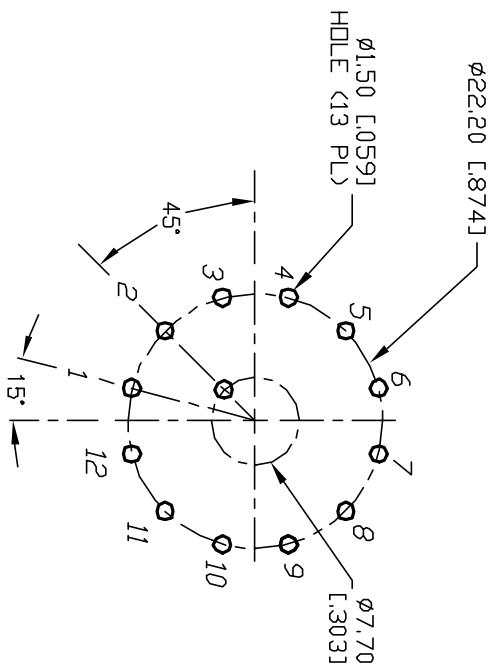
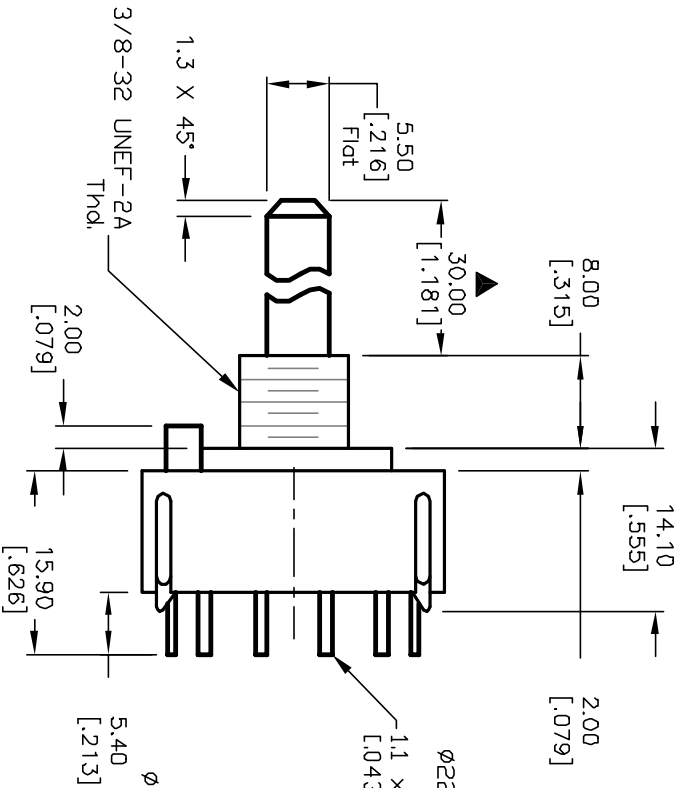
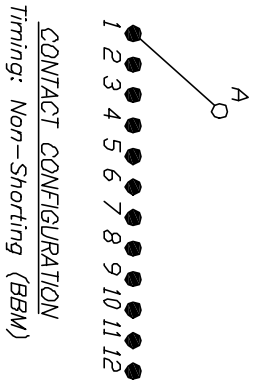
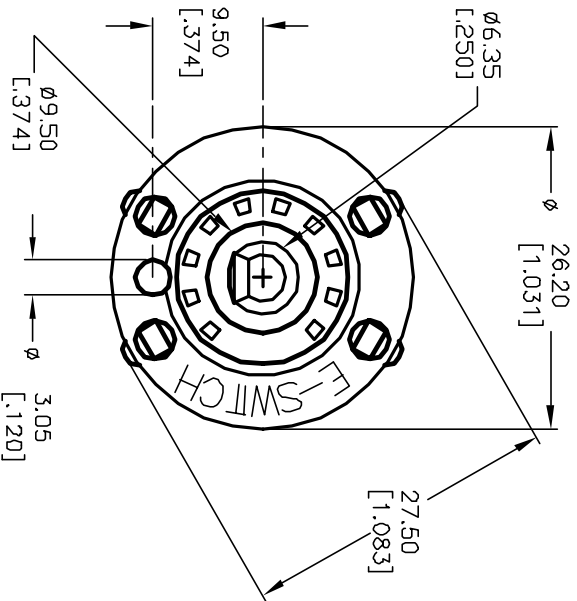
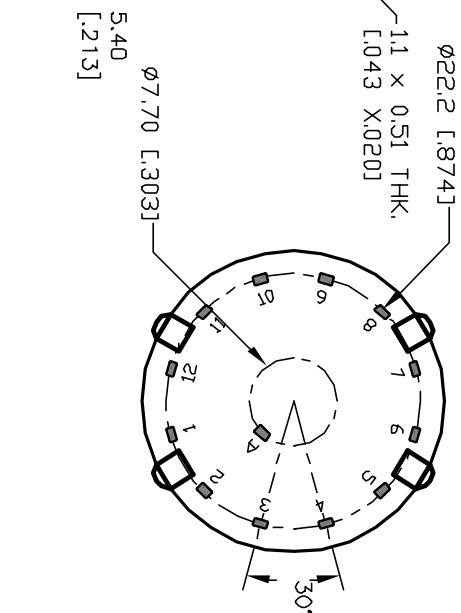


- NOTES:
1. ALL DIMENSION IN MM [INCH]
 2. GENERAL TOLERANCE: X.X=±0.4
X.XX=±0.25
 3. TERM. NOS. FOR REF. ONLY
 4. CONTACT RATING SWITCHING: 150mA, 250V AC/DC
350mA, 110V AC/DC
 5. CONTACT RATING (NON-SWITCHING) 5A
 6. OPERATING FORCE: 425±100 CM/STANDARD
 7. OPERATING TEMP: -30° to 85°C
 8. CIRCUIT SP: 12 POSITIONS, 30° INDEX, NO STOPS
 9. DIELECTRIC STRENGTH 1000V RMS min. @ SEA LEVEL
 10. DESIGNATE MAJOR DIMENSIONS
 11. LOCK NUT AND WASHER NOT SHOWN.



RECOMMENDED P.C.B. LAYOUT



B		12220	REV. PART DESC. PER CATALOG	6/11/02	CJB	TITLE	KC-10-A-(30.0mm) 01-N-P-S		
A		11301	RELEASED FOR PRODUCTION	3/13/01	CJB	SCALE	DATE	DR	REV
REV.		ECN No.	DESCRIPTION	DATE	CHKD	1.5:1	3/13/01	CJB	B
THE INFORMATION CONTAINED IN THIS DOCUMENT IS PROPRIETARY TO E-SWITCH AND IS NOT TO BE COPIED OR TRANSFERRED						DWG	G510430		

E-SWITCH®